

TECHNICAL RIDER

« RUINES » Franck Vigroux

V3 Update november 24, 2016

Technical contacts: Carlos DUARTE (Technical manager)
0033(0)6.16.45.75.10
duarte.carlos48@gmail.com

Perrine CADO (Lights and scenography)
0033(0)6.71.64.06.97
cado.perrine@yahoo.fr

Welcome :

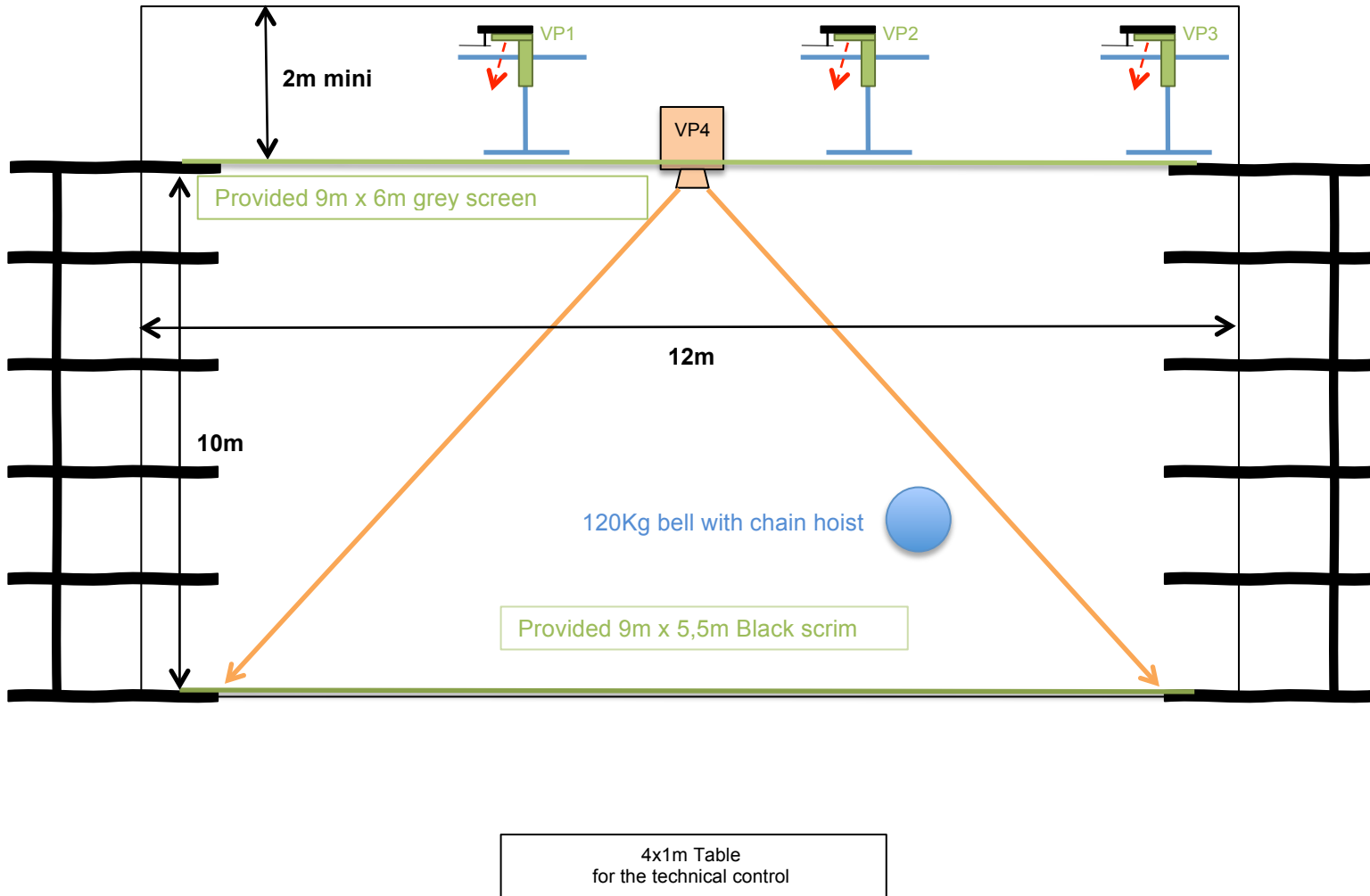
We need a heated room and peaceful for the preparation of the performers on the day of the show.

A light catering in our dressing room will be highly appreciated (water, natural juice, fruits, coffee, tea...).

Schedule:

Day	Schedule	Activity	Staff to provide	Observations
D - 1	9:00 am - 1:00 pm	Get in. Scrim, lights, video, carpentry, sound	2 stage technicians 2 light technicians 1 Sound/video technician	The lights, the legs, the sound system must already be installed before our arrival
D - 1	12:00 am - 1:00 pm	Light settings + lunch break Carlos & Sam	1 stage technician 2 light technicians	
D - 1	1:00 pm - 2:00 pm	Video settings + lunch break Perrine		
D - 1	2:00 pm - 4:00 pm	Video settings		
D - 1	4:00 pm - 6:00 pm	Light & fog settings	2 light technicians	
D - 1	6:00 pm - 7:00 pm	Sound installation	1 Sound/video technician	
D - 1	7:00 pm - 8:00 pm	lunch break		
D - 1	8:00 pm - 10:00 pm	Sound settings	1 Sound technician	
D	10:00 am - 12:00 pm	Sound check Franck & Ben	1 Sound/video technician	
D	11:00 am - 1:00 pm	Lights and stage finishing Technical rehearsal	1 stage technician 1 light technician	
D	1:00 pm - 2:00 pm	lunch break		
D	2:00 pm - 4:00 pm	Rehearsal	1 stage technician 1 light technician 1 Sound/video technician	
D	4:00 pm - 6:00 pm	Finishing	1 light technician	
D	6:00 pm - 7:00 pm	Stage cleaning	1 stage technician	
D	7:00 pm - 8:00 pm	lunch break		
D	8:15 pm - 8:30 pm	Opening doors		15 minutes
D	8:30 pm - 9:30 pm	Show	1 stage technician 1 light technician 1 Sound/video technician	50 minutes
D	10:00 pm - 12:00 pm	Dismantling, Get out	4 technicians	

THE STAGE



The public must be installed in the field of view of our black scrim, and according to the architecture of the room. We reserve the right to modify the layout of the public. The technical control (light, video, electronic instruments, mixing desk ...) will be installed imperatively behind the last row of the public and **NEVER** in an isolated control room, closed or out of the sound diffusion and the visual field of the rear screen.

Italian style black legs.

Height under booms 7m minimum.

Stage size 12m x 12m.

The floor will be covered with a black dance mat.

Moving booms.

- 1 fog machine MDG Max 3000 and no « Atmosphère » with DMX remote control and fan.

- betwin 2 and 4 nightlights.

We provide a 9x6m black scrim hanging on the upstage.

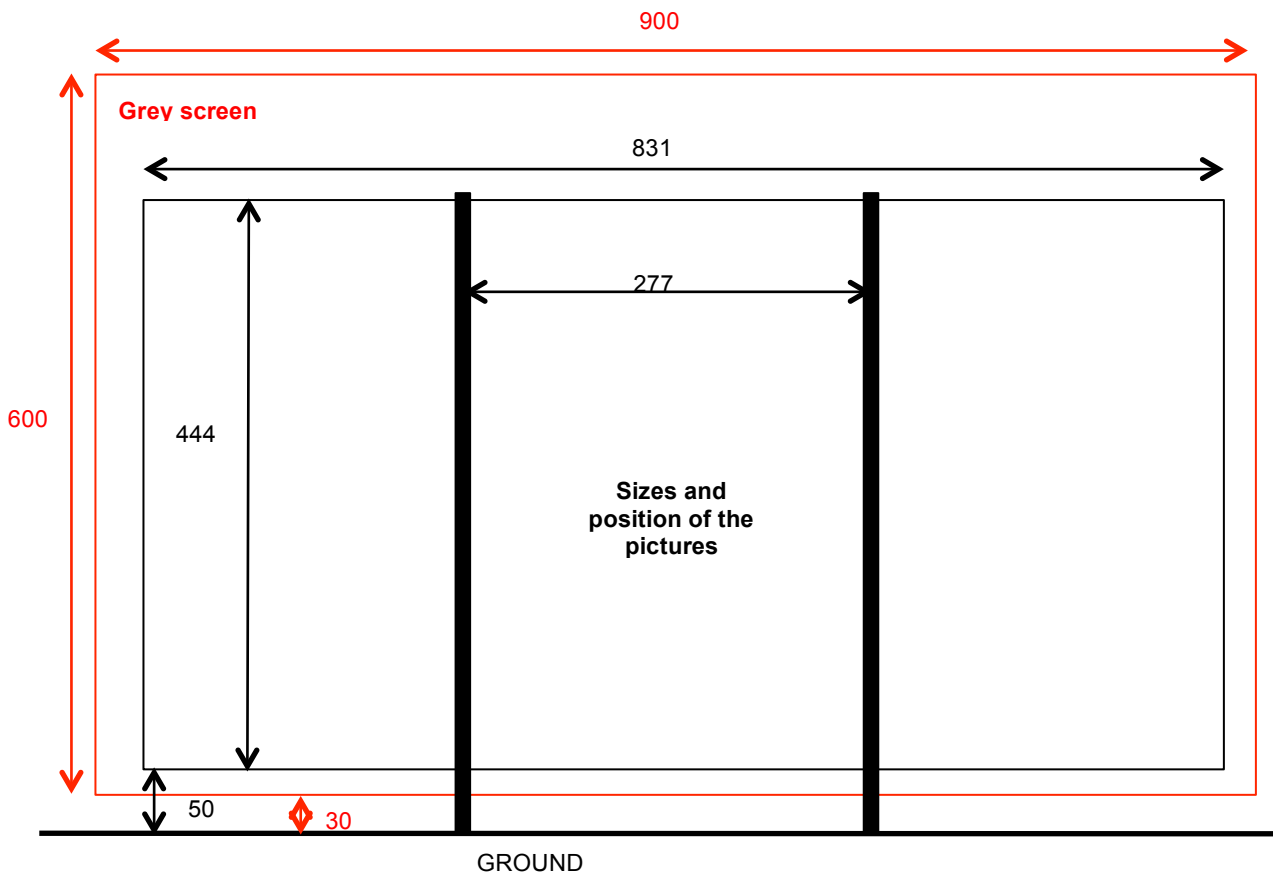
- We need black borders and black legs for our black scrim.

WARNING ! We use a lot of smoke, so it's strongly recommended to disable the fire zones of the main room as well as those on the periphery.

We need to control the heating and ventilations of the room.

Thank you for making a perfect dark room, to cut the nightlights etc ...

VIDEO



- One silent 6000 to 10000 lumens DLP video projector (VP4) with a 0,8 wide lens that can cover the entire black scrim. Natively 16/9 with a minimum 1280x720 resolution.
- One DMX video shutter
- A video link from the control room to your video projector (VP4) with 2 VGA high quality cables of 30m and a VGA booster (if more than 30 m) corresponding to the resolution of your video projector. This connection can also be made in RJ45 Cat6 with converter boxes RJ45 to VGA or HDMI.
- 1 HDMI computer monitor.
- 1 DMX 512 splitter for all video shutters.

We provide 3 « fish eye » video projectors with wires and a self-supporting system at half-height behind the video grey screen as well as 3 video shutters. We provide 1 grey video screen (9m x 6m) hanging on the downstage. This screen will be suspended at 30cm from the ground.

We need 2 black legs on the same boom and a black border on a separated moving boom.

We need a dark room so thank you to anticipate problems with emergency lights.

LIGHTS

(layout inclosed)

- 1 lighting desk Congo ETC (depending on our light technician)
- 16 Robert Juliat 613 sx + LEE 201 + LEE 202
- 3 PC 1Kw + shutters or black wrap + LEE 201 + LE 202
- 1 Martin Atomic 3000 (+ 2 clamps and black DMX wire)
- 5 cycliodes for the public
- 8 ground plates
- 2 stands or ladders with 2m height
- 48 DMX dimmers
- 10 DMX 5 points (10m and 15m)
- 30 16A power plugs (10 and 15m)
- Aluminium gaffer

We provide a lighting desk (Mac).

Machinery:

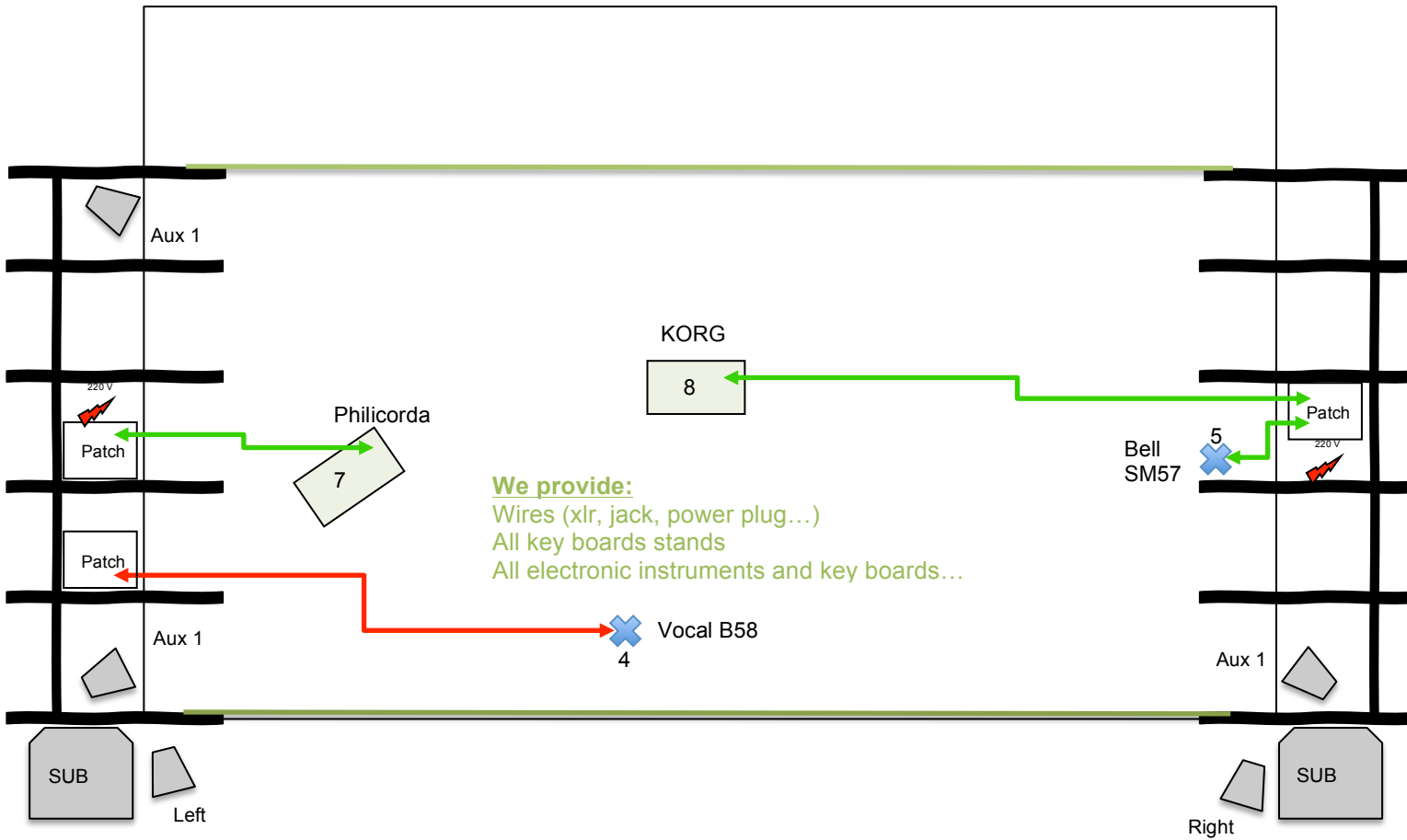
- 1 stepladder (2m height).
- 20 10kg loads.
- 2 Black mic stands.
- 1 Control station for a rope (stand+loads etc...)
- 1 Black and thick carpet strip to cushion tulle fall (40cm x 9m)

We provide all stage accessories as well as pulleys, halyards and control stations to hang clothes and objects all over the grill (15kg max per item).

We will suspend on the grill or on a boom, a real 120kg bell at 1 m from the ground.

We provide a manual chain hoist for the descent and ascent of our bell.

SOUND



We provide:
Wires (xlr, jack, power plug...)
All key boards stands
All electronic instruments and key boards...

FOH sound system

1 Balanced and homogeneous sound system covering the entire audience like NEXO PS15, L.ACOUSTICS MTD115, d&b Q7 or Line Array... on L/R output. 2 Subs 18" minimum.

Monitor sound system

3 sides with 1,8m height stand like NEXO PS15, L.ACOUSTICS MTD115, d&b Q7 ... on auxiliary 1.

Mixing

- 1 mixing desk Yamaha M7CL, CL5.
- 3 lighting lamp .

Microphones

- 2 UHF DPA 4088 impératif

- 2 DI BSS
- 1 B58 Shure + 1 black round base mic stand
- 1 SM57 Shure + 1 black short mic stand
- 2 intercoms (1 for light technician and 1 for stage technician)

Input patch

N°	Source	Mic/DI	Insert	Observations
1	Electro L	XLR		Control room
2	Electro R	XLR		Control room
3	UHF Ben	DPA 4088		
4	Chant Ben	B58		Round base mic stand
5	Bell Mic	SM57		Short mic stand
6				
7	Philicorda	DI BSS		On stage
8	KORG	DI BSS		On stage
9	Philicorda FX	Internal Fx		Rotary
10	Philicorda FX	Internal Fx		Rotary
11	Bell Hall	Internal Fx		HALL 18s
12	Bell Hall	Internal Fx		HALL 18s
13	PCM 91 L	AES ou SPDIF		Provided
14	PCM 91 R	AES ou SPDIF		Provided
15	PB L	XLR		Provided
16	PB R	XLR		Provided

Output patch

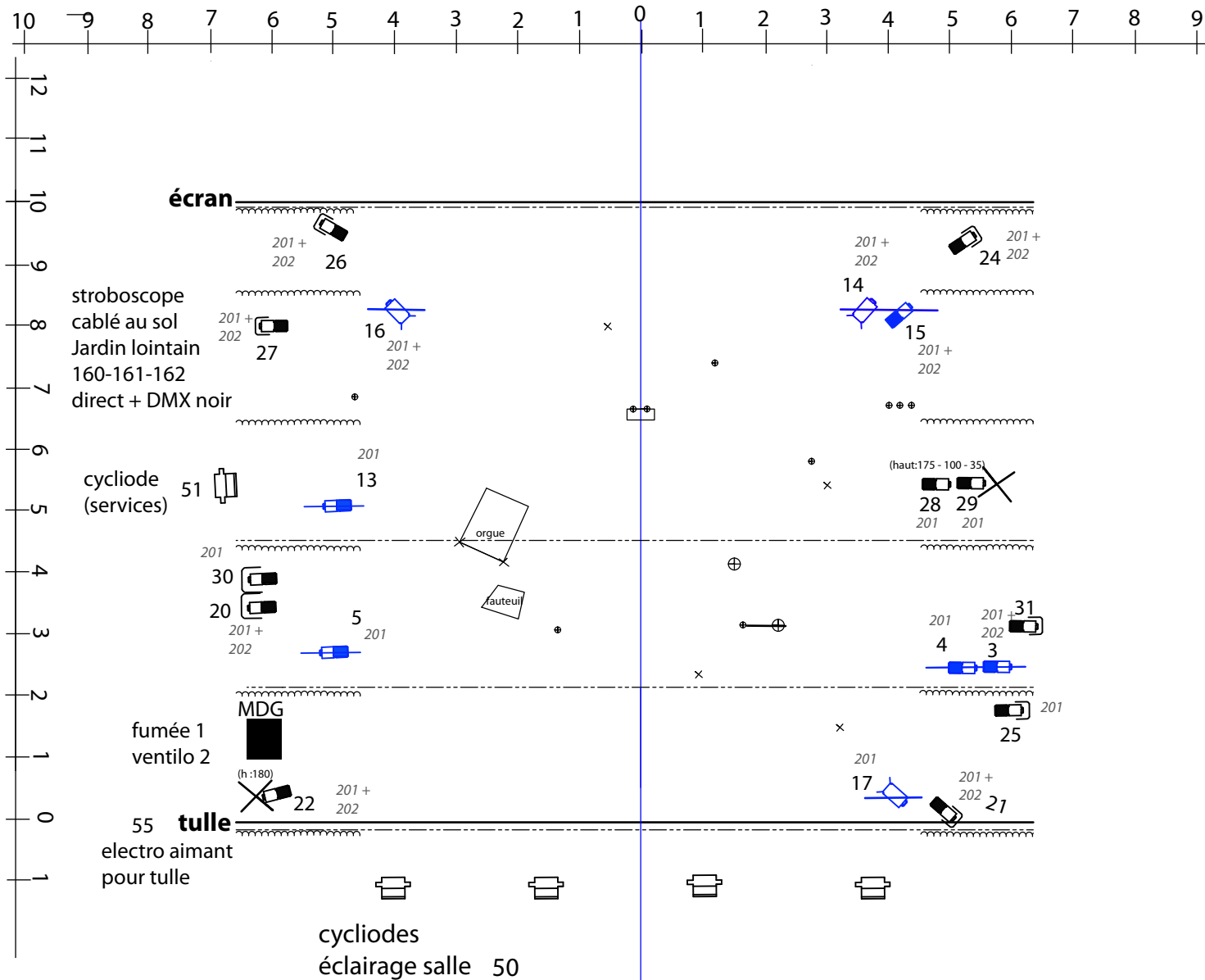
Source	Out	Insert in/out
Mix L	Video	
Mix R	Video	
(bus 1) Omni 1	L FOH	
(bus 2) Omni 2	R FOH	
(bus 3) Omni 3	SUB	
(aux 1) Omni 4	Sides	
(aux 5)	FX Philicorda	
(aux 6)	Hall	
(aux 7)	PCM 91 AES	
(aux 8)	Usine ADAT 1	

RUINES

Cie D'autres Cordes

plan plateau-lumière

contact : cado.perrine@yahoo.fr



- | | | | | | |
|---|-------------------------|-------|---------------|---|-------------|
| ⊕ | mobile chaudron | --- | frise | ☐ | sur platine |
| ⊕ | suspension | ~~~~~ | pendrillon | ☐ | sur perche |
| × | repère sol | ☐ | découpe 613 | ☐ | sur pied |
| ⊕ | cloche + palan | ☐ | cycliode | | |
| ⊕ | stroboscope atomic 3000 | ☐ | PC 1kw + gaff | | |